



SpoolQ Configuration and Management Software

USER GUIDE

Version 1.0

FUNASSET

FunAsset Limited, Foundry House, Foundry Road, Taunton, Somerset, TA1 1JJ, UK
Telephone +44 (0)1823 365864. Fax +44 (0)1823 277266
Email: info@funasset.com Website: funasset.com

Contents	page
Introduction	2
Terminology	2
Installation	3
Running QControl	4
System Properties	5
Startup Options	6
Task Properties	6
Task Persistency	7
Log file	7
Configuration files	7
Contact Details	7

Introduction

QControl is the integrated spool configuration and management suite from FunAsset.

QControl provides an easy way to configure, launch and manage your TN systems and print spools.

Terminology

The following terms are used extensively throughout this guide:

<i>Task</i>	A program that takes data from an input source, processes the data and outputs the resultant data to an output destination.
<i>System</i>	A group of related tasks.
<i>SpoolQ</i>	FunAsset's print spool management and routing software.
<i>TN6000 task</i>	A task belonging to a non-spooling system.

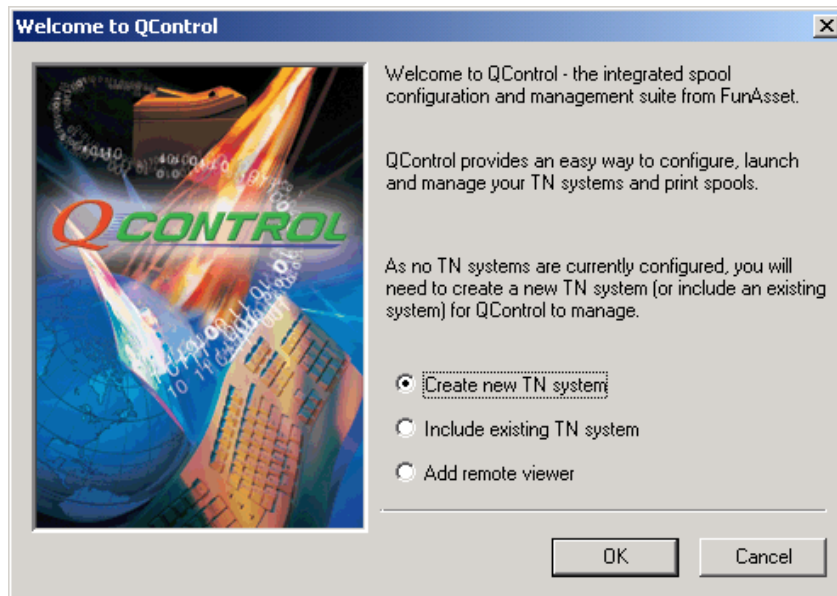
Installation

To install QControl, run the installation program "QControlSetup.exe".

The install program will prompt you for where you want to install QControl. The default installation folder is "C:\Program Files\QControl".

As well as installing the QControl software and configuration files, the installation program will also create a desktop icon to launch QControl and add a "FunAsset QControl" group to the Windows Start menu.

The first time you run QControl, you will be presented with the Welcome dialog:



The Welcome dialog contains the following 3 options:

1. Create new TN system

Choose this option to create a new local spool. This is the option you would choose if the PC has never had SpoolQ or any other TN system installed i.e. a virgin installation.

2. Include existing TN system

Choose this option if you are installing QControl on a PC that already has SpoolQ and or a TN system installed. Selecting this option will let you browse the local PC and choose the pre-existing spool you wish to add to QControl's set managed systems.

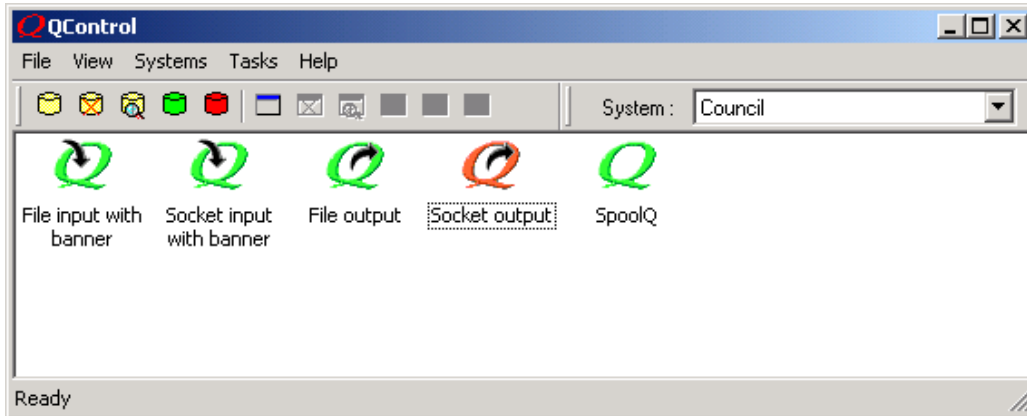
3. Add remote viewer

This option adds a local copy of SpoolQ and configures it as the viewer of a remote spool. This option can only be used when SpoolQ has already been installed on a network server. The SpoolQ folder on the server MUST have a share that is available to the local machine. This option lets you browse the network to locate the remote system you wish to view.

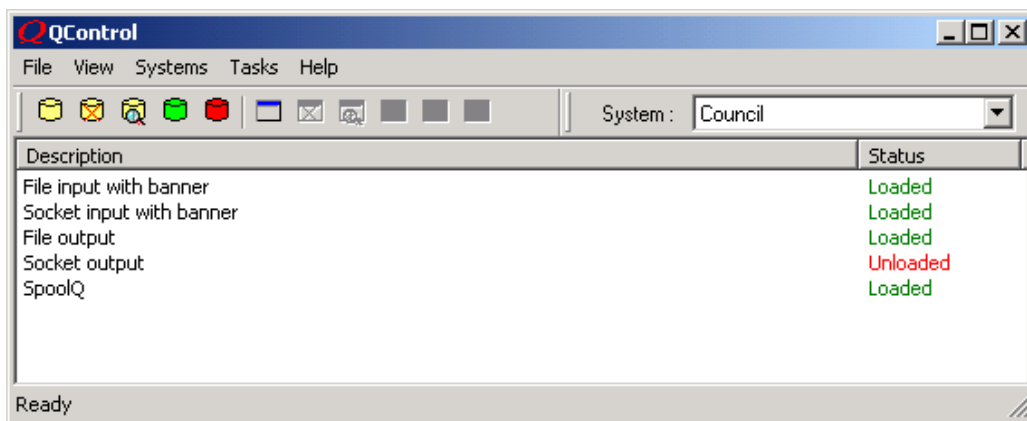
Running QControl

QControl can be launched either via the desktop icon or the "QControl" option on the Start menu. Additionally, QControl may be configured to run at Windows logon (see 'Startup options').

QControl shows the tasks within each system either as icons (default) or in a list. Users may switch between icons and list views via the 'View' menu.



Icon view of the system "Council"



List view of the system "Council"

Red icons/text indicate tasks that are unloaded i.e. task executable not running
 Green icons/text indicate tasks that are loaded (.exe running).

The following icons are used to represent tasks:



TN6000 tasks



Tasks providing input to SpoolQ



SpoolQ



Tasks passing data from SpoolQ to external output

Each task runs as a Windows application in its own right and, as such, possesses its own main window. You can view the task window of a selected task in any of the following ways:

1. Right-click and select 'View window' from the popup menu;
2. Choose the 'View task window' from the 'Tasks' menu;
3. Click the view task window graphic within the toolbar.

Note: SpoolQ windows are displayed as soon as the SpoolQ icon/list item is selected.

System Properties

The system properties may be viewed by selecting the 'Properties' option from the 'Systems' menu:



Administrators may limit the actions available to operators by changing the "Permitted actions" and securing the QControl configuration by setting a password.

Startup options

The 'Startup options' item within the 'Systems' menu allows you to customise QControl's startup:



Checking the 'Run QControl at Windows logon' checkbox adds a QControl entry in the "Run" branch of the Windows registry. This causes QControl to be run every time a user performs a Windows logon.

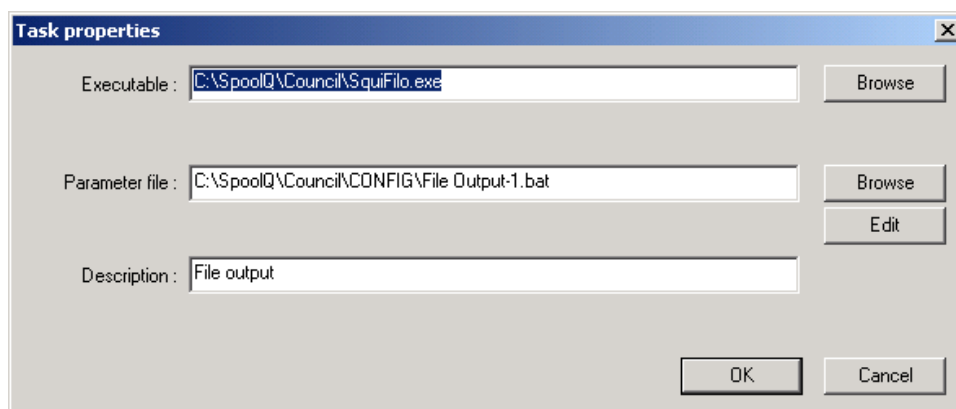
Checking the 'Automatically launch all tasks/spools' checkbox will cause QControl to launch ALL tasks when it starts.

If you require QControl to launch all tasks at Windows logon, **both** options should be checked.

Task Properties

Task properties may be viewed by:

1. Right-clicking a selected task and then choosing 'Properties' from the popup menu;
2. Choosing the 'Properties' option from the 'Tasks' menu;
3. Clicking the task properties graphic within the toolbar.



The task properties dialog will allow you to view and change the task executable, the parameter file associated with the task and the text used to describe the task in the 'system view'.

Clicking the 'Edit' button will launch the **Task Editor** to allow modification of the parameter file contents.

Task Persistency

Whenever QControl is run, it automatically detects which tasks are running and updates the system view accordingly - displaying loaded tasks in **GREEN** and unloaded tasks in **RED**.

When QControl is closed, all loaded tasks continue to run.

QControl can, therefore, be closed when not required to view/administer tasks.

Log file

QControl maintains a detailed log file that records the date and time tasks are launched and stopped. The log file also records events such as users creating or excluding systems.

The log file is written to the ASCII file 'qcontrol.log' and may be viewed via the 'Log File' menu option within the 'View' menu.

Configuration files

All of the QControl configuration settings are stored in the file **qcontrol.ini** and the configuration of each task is held in it's own parameter file. It is recommended that you make a safe backup of all configuration files after the installation and configuration of the software and also following any subsequent changes to the configuration.

Contact Details

FunAsset Website	funasset.com
Email	support@funasset.com
Telephone	+44 (0)1823 365864